

1 South Church Street Suite 301



For Lease

Third Floor 1,202 SF

CAN DO Renaissance Center
1 S. Church Street
Suite 301
Hazleton, PA 18201



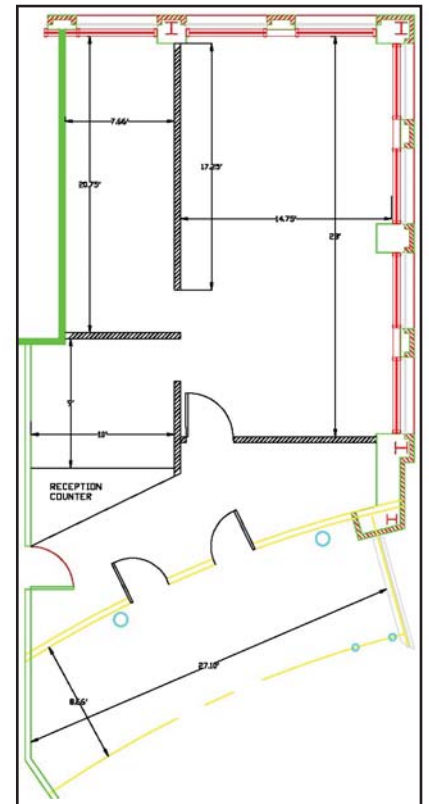
Prime Class "A" Space ideal for
Front Office, Retail, or Professional Use

Lease Space Amenities

- 3rd floor office suite
- Faces Broad & Church Streets
- Conference room
- Lunch room
- Reception area
- **PARKING AVAILABLE**

CAN DO Renaissance Building Info

- | | |
|-----------------|--|
| Ceiling Height: | 10 feet |
| Lighting: | Fluorescent |
| Electricity: | PPL Electric Utilities |
| HVAC: | Forced air |
| Telecom: | Verizon fiber optic -
Various internet speeds |
| Building Hours: | 7:30 am to 6:00 pm |



This office suite is nestled in the CAN DO Renaissance Center, located on the corner of Church & Broad Streets - The Crossroads of Greater Hazleton! Just 5 miles to Interstate 81 & minutes to Interstate 80.

For more information, please contact CAN DO at 570/455-1508

