

1 South Church Street Suite 304



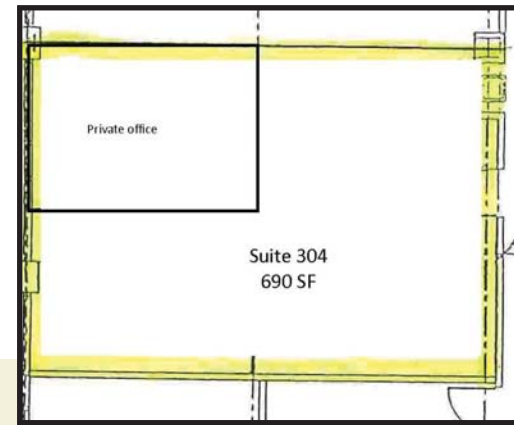
For Lease

Third Floor 690 SF

CAN DO Renaissance Center
1 S. Church Street
Suite 304
Hazleton, PA 18201



**Prime Class "A" Space ideal for
Front Office or Professional Use**



Lease Space Amenities

- 3rd floor office suite with main office area
- Includes 1 enclosed private office
- Reception area
- **PARKING AVAILABLE**

CAN DO Renaissance Building Info

Ceiling Height:	10 feet
Lighting:	Fluorescent
Electricity:	PPL Electric Utilities
HVAC:	Forced air
Telecom:	Verizon fiber optic - Various internet speeds



1 S. Church Street, Suite 200
Hazleton, PA 18201
(570) 455-1508 main | (570) 454-7787 fax
www.hazletoncando.com



This office suite is nestled in the CAN DO Renaissance Center, located on the corner of Church & Broad Streets - The Crossroads of Greater Hazleton! Just 5 miles to Interstate 81 & minutes to Interstate 80.